

GEDGE SYSTEMS - Since 1978 Australia's Leading Manufacturer of High Accuracy Weighing Electronics now bringing you Superior Quality Gedge Load Cells.

Shown:- GK2107S0.5 50kg Stainless Steel IP67 Shear Beam Load Cell on GKBP07-01S Stainless Steel Base Plate with RMOUNT50 Rubber Mount.

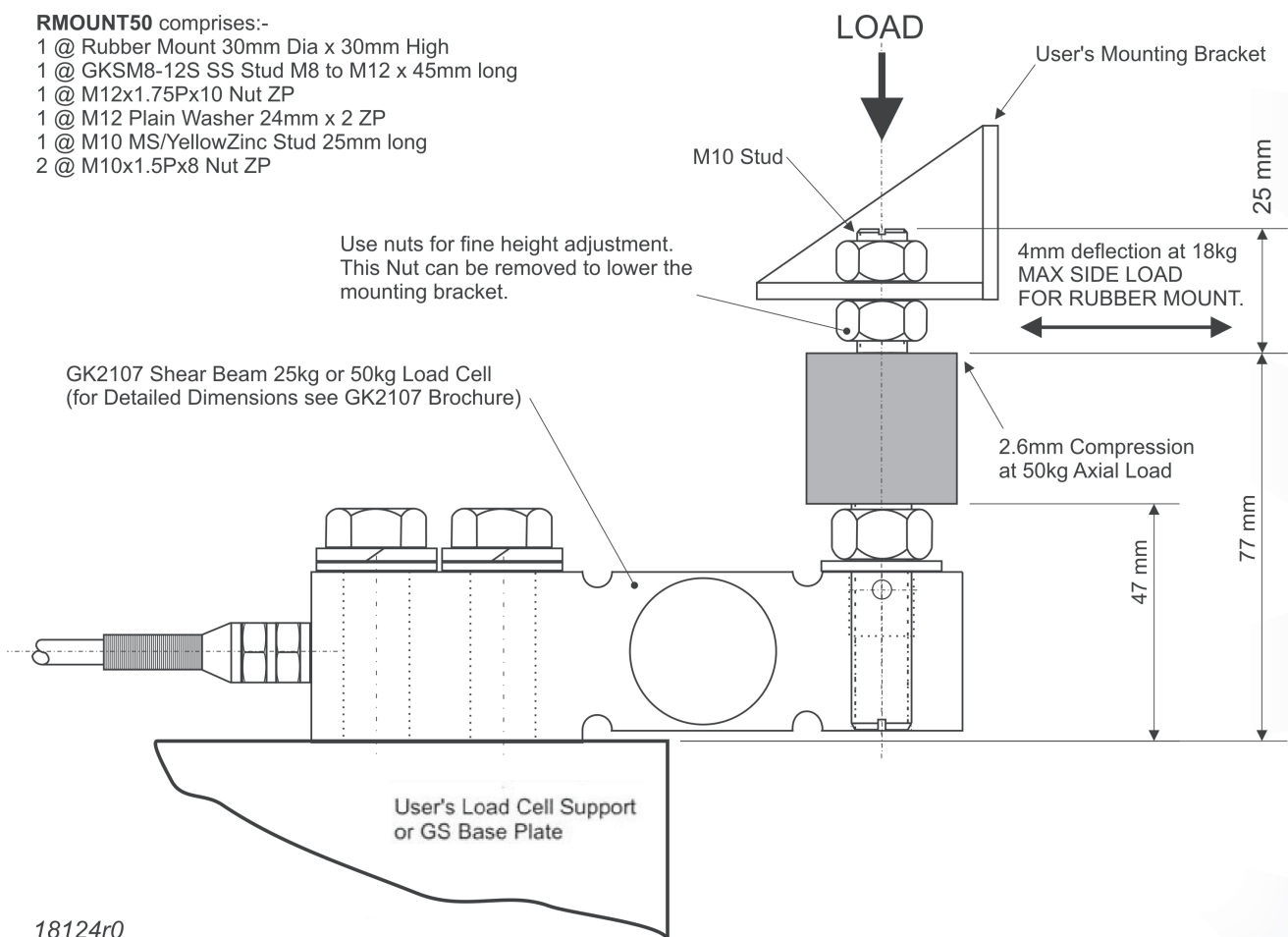


**RMOUNT50** comprises:-

- 1 @ Rubber Mount 30mm Dia x 30mm High
- 1 @ GKSM8-12S SS Stud M8 to M12 x 45mm long
- 1 @ M12x1.75Px10 Nut ZP
- 1 @ M12 Plain Washer 24mm x 2 PZ
- 1 @ M10 MS/YellowZinc Stud 25mm long
- 2 @ M10x1.5Px8 Nut ZP

Use nuts for fine height adjustment. This Nut can be removed to lower the mounting bracket.

GK2107 Shear Beam 25kg or 50kg Load Cell (for Detailed Dimensions see GK2107 Brochure)



18124r0

GEDGE SYSTEMS - Since 1978 Australia's Leading Manufacturer of High Accuracy Weighing Electronics now bringing you Superior Quality Gedge Load Cells.

Shown:- GK2107S2.5 250kg Stainless Steel IP67 Shear Beam Load Cell on GKBP07-01S Stainless Steel Base Plate with RMount250 Rubber Mount.  
{Load Spreading Washers Not Shown}

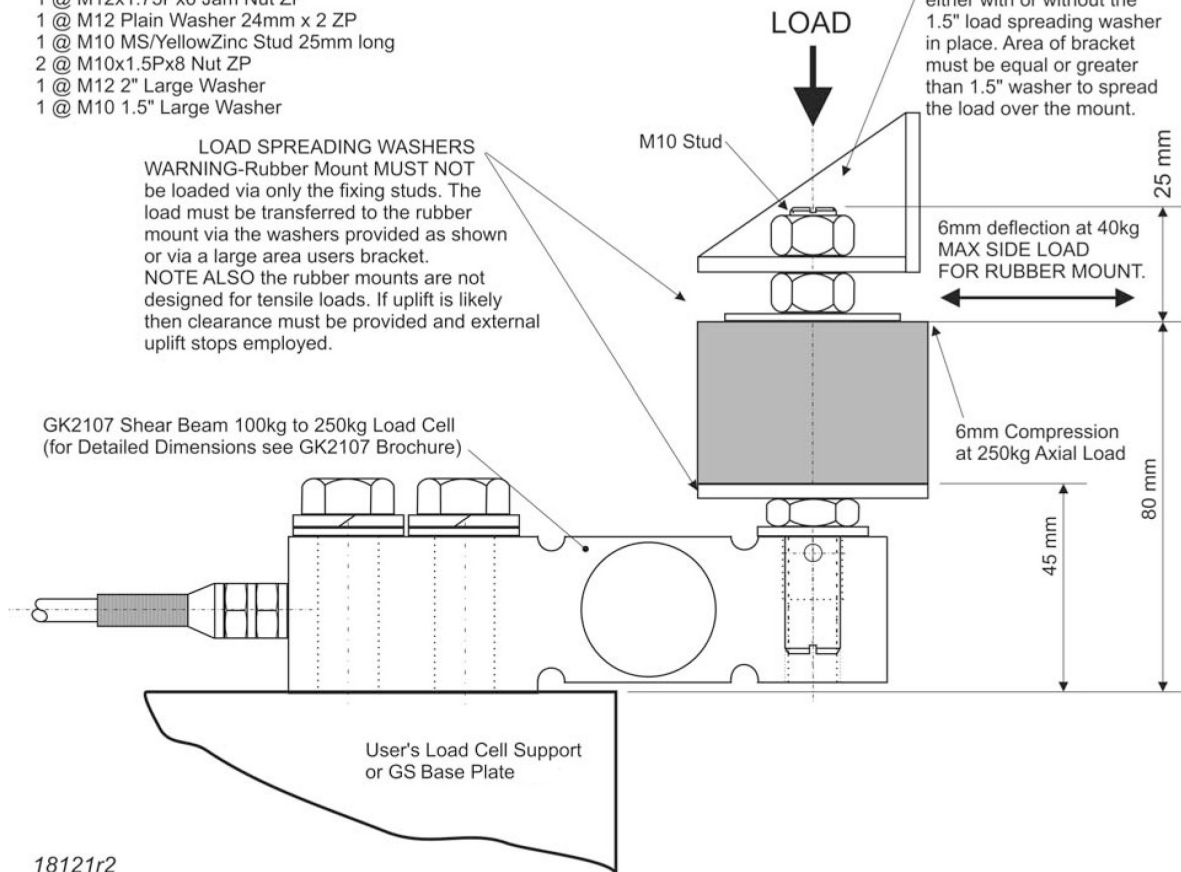


**RMount250** comprises:-

- 1 @ Rubber Mount 50mm Dia x 35mm High
- 1 @ Stud MS/Yellow Zinc M10 to M12 x 35mm long
- 1 @ M12x1.75Px6 Jam Nut ZP
- 1 @ M12 Plain Washer 24mm x 2 ZP
- 1 @ M10 MS/YellowZinc Stud 25mm long
- 2 @ M10x1.5Px8 Nut ZP
- 1 @ M12 2" Large Washer
- 1 @ M10 1.5" Large Washer

**LOAD SPREADING WASHERS**  
WARNING-Rubber Mount MUST NOT be loaded via only the fixing studs. The load must be transferred to the rubber mount via the washers provided as shown or via a large area users bracket.  
NOTE ALSO the rubber mounts are not designed for tensile loads. If uplift is likely then clearance must be provided and external uplift stops employed.

User's Mounting Bracket  
NOTE:- The bracket can sit directly on the mount either with or without the 1.5" load spreading washer in place. Area of bracket must be equal or greater than 1.5" washer to spread the load over the mount.



18121r2

GEDGE SYSTEMS - Since 1978 Australia's Leading Manufacturer of High Accuracy Weighing Electronics now bringing you Superior Quality Gedge Load Cells.

Shown:- GK2107S-10 1,000kg Stainless Steel IP68 Shear Beam Load Cell on GKBP07-01S Stainless Steel Base Plate with RMOUNT1000 Rubber Mount.  
{Load Spreading Washers Not Shown}

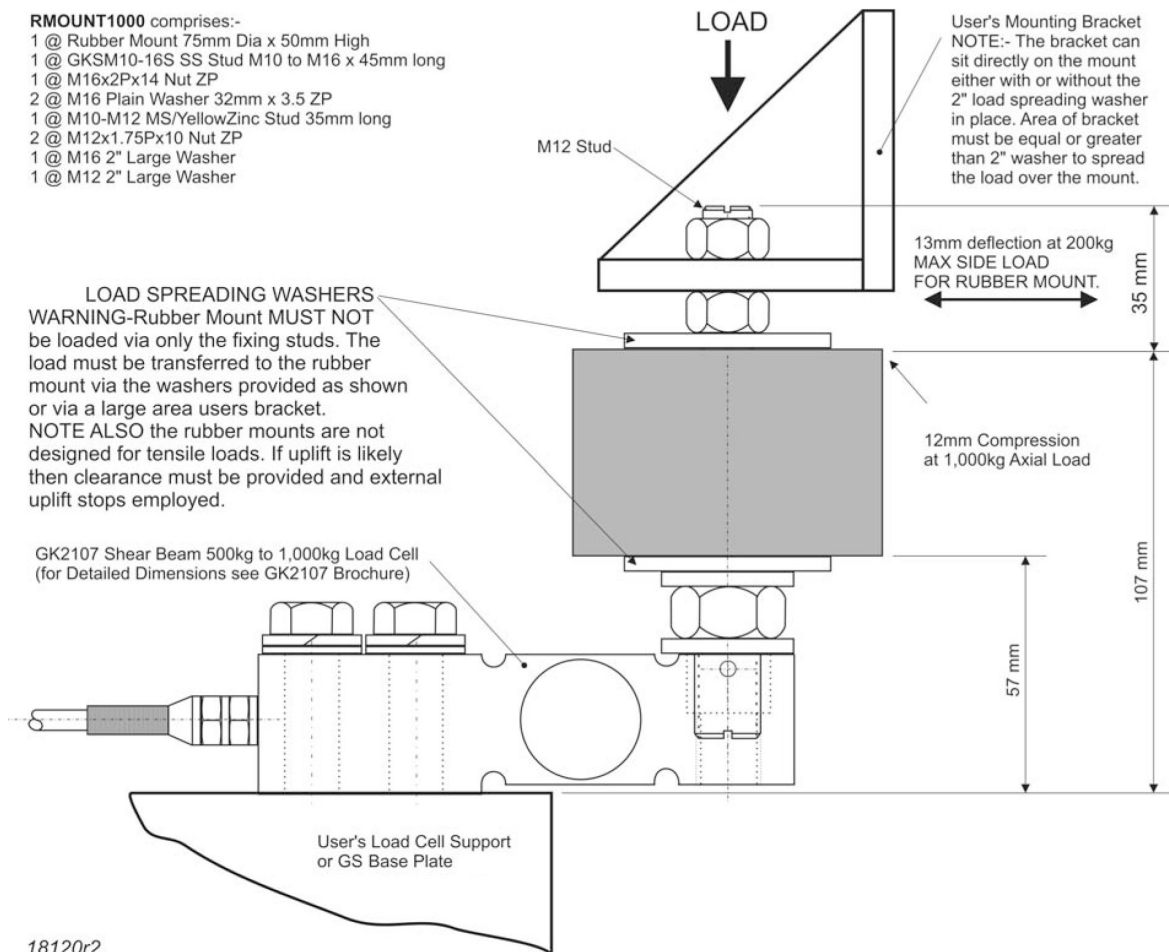


**RMOUNT1000** comprises:-

- 1 @ Rubber Mount 75mm Dia x 50mm High
- 1 @ GKSM10-16S SS Stud M10 to M16 x 45mm long
- 1 @ M16x2Px14 Nut ZP
- 2 @ M16 Plain Washer 32mm x 3.5 ZP
- 1 @ M10-M12 MS/YellowZinc Stud 35mm long
- 2 @ M12x1.75Px10 Nut ZP
- 1 @ M16 2" Large Washer
- 1 @ M12 2" Large Washer

**LOAD SPREADING WASHERS**  
WARNING-Rubber Mount MUST NOT be loaded via only the fixing studs. The load must be transferred to the rubber mount via the washers provided as shown or via a large area users bracket.  
NOTE ALSO the rubber mounts are not designed for tensile loads. If uplift is likely then clearance must be provided and external uplift stops employed.

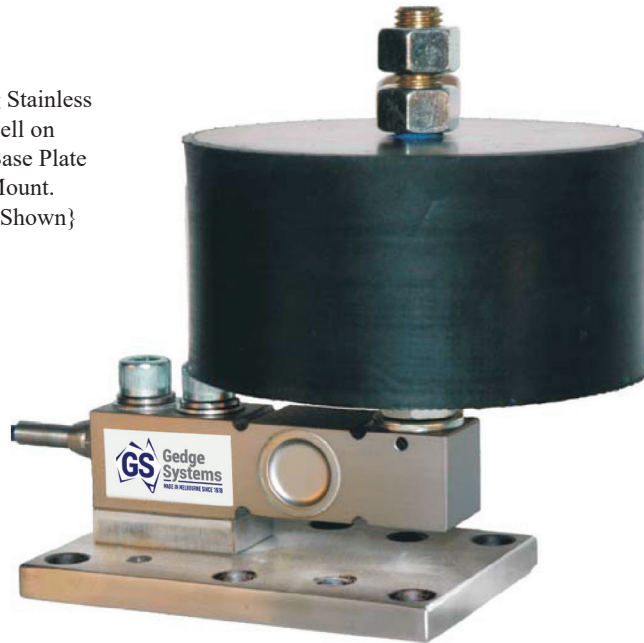
GK2107 Shear Beam 500kg to 1,000kg Load Cell  
(for Detailed Dimensions see GK2107 Brochure)



18120r2

GEDGE SYSTEMS - Since 1978 Australia's Leading Manufacturer of High Accuracy Weighing Electronics now bringing you Superior Quality Gedge Load Cells.

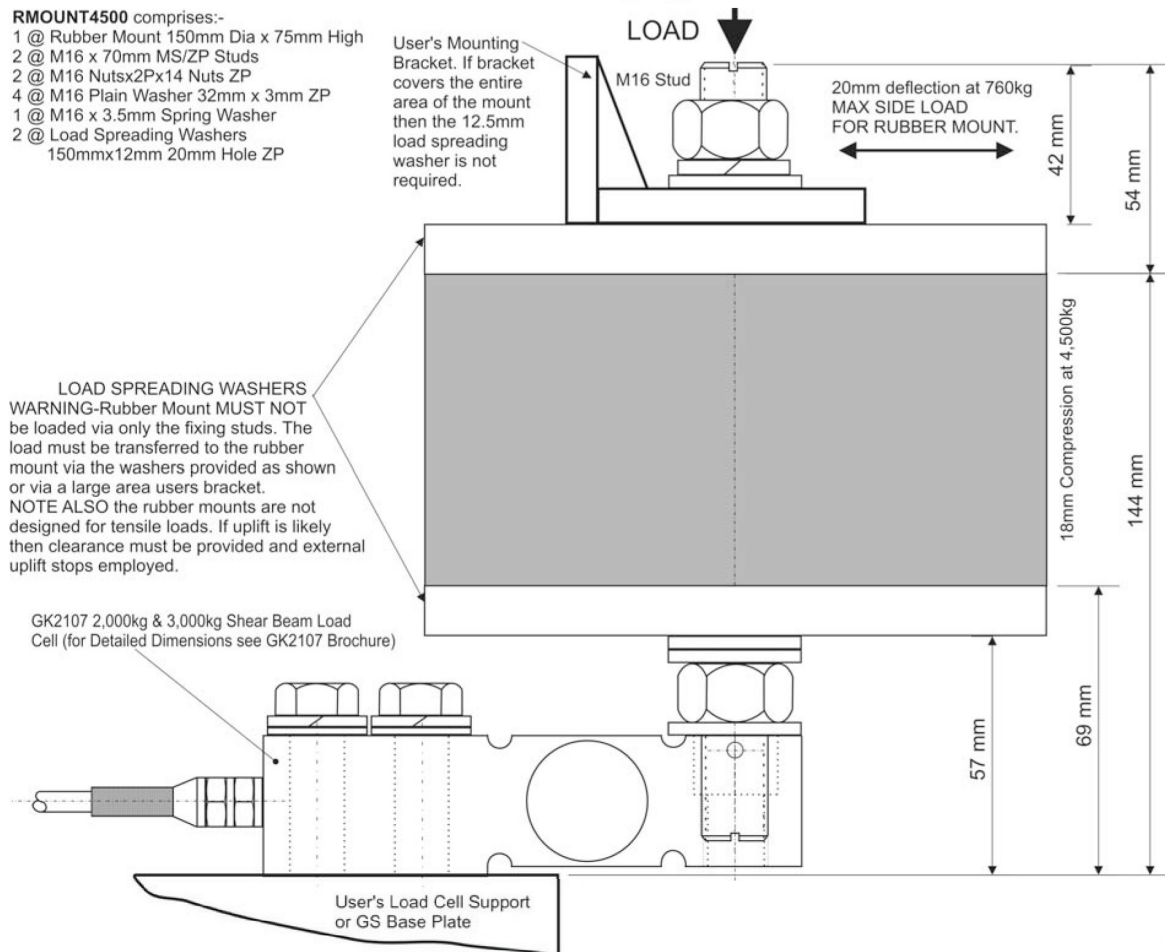
Shown:- GK2107S-30 3,000kg Stainless Steel IP68 Shear Beam Load Cell on GKBP07-01S Stainless Steel Base Plate with RMOUNT4500 Rubber Mount.  
{Load Spreading Washers Not Shown}



**RMOUNT4500** comprises:-

- 1 @ Rubber Mount 150mm Dia x 75mm High
- 2 @ M16 x 70mm MS/ZP Studs
- 2 @ M16 Nutsx2Px14 Nuts ZP
- 4 @ M16 Plain Washer 32mm x 3mm ZP
- 1 @ M16 x 3.5mm Spring Washer
- 2 @ Load Spreading Washers 150mmx12mm 20mm Hole ZP

User's Mounting Bracket. If bracket covers the entire area of the mount then the 12.5mm load spreading washer is not required.





GEDGE SYSTEMS - Since 1978 Australia's Leading Manufacturer of High Accuracy Weighing Electronics now bringing you Superior Quality Gedge Load Cells.

Shown:- GK2107S-50 5,000kg Stainless Steel IP68 Shear Beam Load Cell on GKBP07-05S Stainless Steel Base Plate with RMOUNT5000 Rubber Mount.



**RMOUNT5000** comprises:-

- 1 @ Rubber Mount 150mm Dia x 75mm High
- 2 @ M18x1.5Px71mm Stainless Steel Studs
- 2 @ M18x1.5Px15 Standard Nut ZP
- 2 @ M18 Plain Washer 34mm x 3 ZP
- 1 @ M18 Spring Washer 20mmIDx5mm ZP
- 2 @ Load Spreading Washers 150mmx12mm ZP

User's Mounting Bracket. If bracket covers the entire area of the mount then the 12.5mm load spreading washer is not required.

**LOAD SPREADING WASHERS**  
WARNING-Rubber Mount MUST NOT be loaded via only the fixing studs. The load must be transferred to the rubber mount via the washers provided as shown or via a large area users bracket.  
NOTE ALSO the rubber mounts are not designed for tensile loads. If uplift is likely then clearance must be provided and external uplift stops employed.

