



The MOUNT includes ALL items shown except the Load Cell

KEY FEATURES & APPLICATIONS

- High Accuracy - by using Shear Beam load cells this Mount offers accuracy to 0.03% Full Scale - twice as accurate as some alternatives.
- A Low Cost solution for ALL Silos and Hoppers in ALL Industries.
- Strong heavy 15.5kg construction - Top and Bottom Plates are of 20mm C45 550MPa Steel.
- Corrosion Resistant - All parts Heavy Industrial Chrome Plated.
- Hardened 1,000MPa Chrome Plated Stainless Steel Load Button and Self Centering Load Cup included.
- Grade 8.8 M30 Anti-Uplift and Safety Post with Nuts & Washers included.
- Uses a SINGLE anti-uplift post - some designs use TWO posts instead with the prospect of one being OVERLOADED if the Top Plate is not DEAD LEVEL or the Posts not PERFECTLY adjusted and not equally sharing the UpLift Load.
- +/-3.5mm of Horizontal freedom for vessel thermal expansion. Beyond that, motion is constrained by load button, load cup and load cell all rated to 5t safe side load (10t max).
- Self centering force 5% of Load.
- 10t Safe UpLift Restraint.
- M30 Post for support of Empty Silo during Installation and as Safety Backup during Operation. Rated 10t

DESCRIPTION & ORDERING

Description:- The Gedge Systems-KMT GKMB02T10C Mount made of C45 550MPa Chrome Plated Steel and GK2102T10 10,000kg IP68 Tool Steel Shear Beam Load Cell provide an Accurate, Strong, Reliable and Safe LOW COST Weighing Solution for all Outdoor or Indoor applications. The Mount design suits Silos, Hoppers and Bins but in reality it suits anything. The Mount includes "in-built" lateral constraint with a range of +/-3.5mm as well as AntiUplift Constraint.

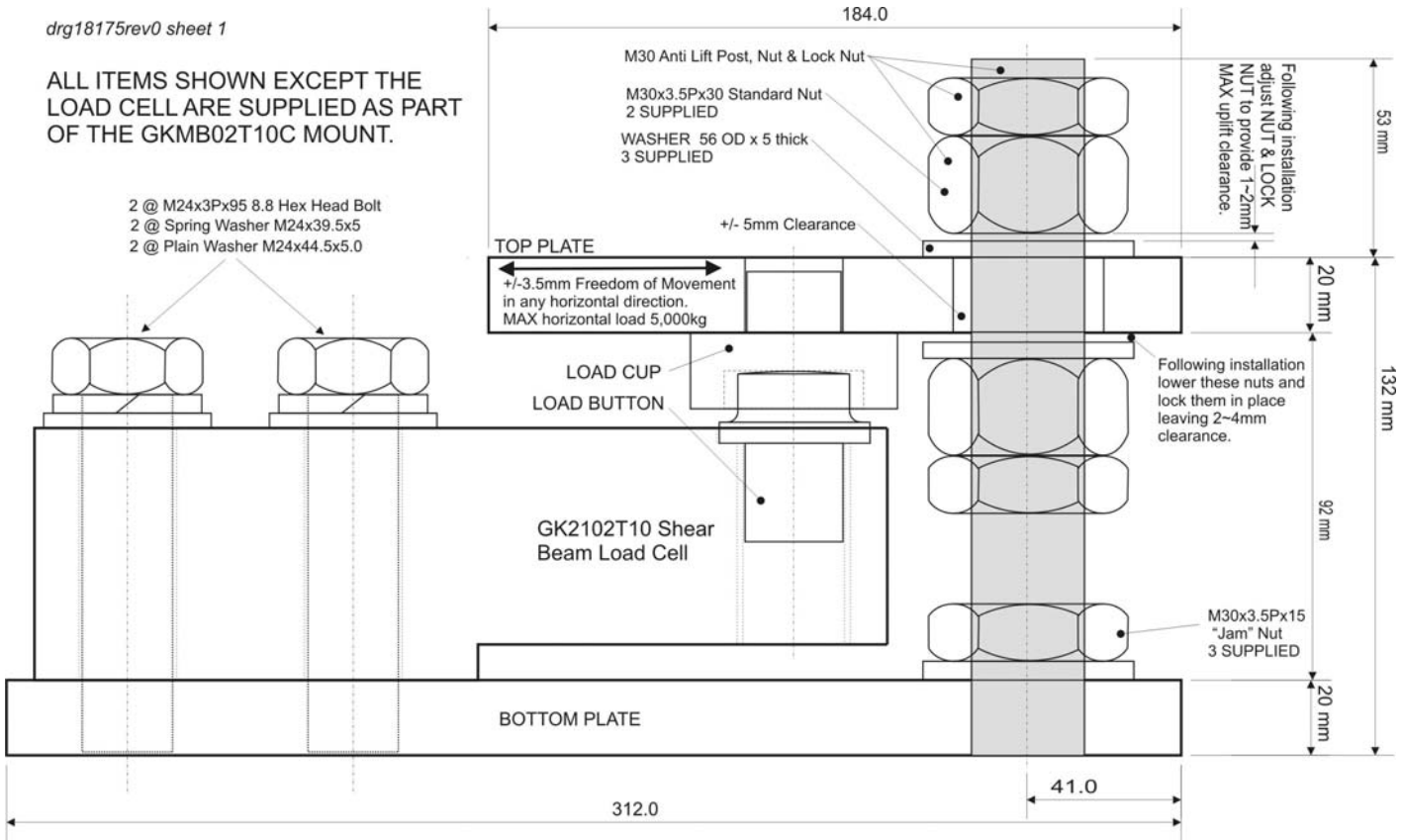
Ordering/Shipping:- The 15.5kg Mount is shipped "flat" for ease of shipping for assembly by the user. The 4kg GK2102T10 Load Cell, which is ordered separately, will be shipped with the Mount. **ORDER-
GKMB02T10C Heavy Duty 10,000kg Mount
GK2102T10 10,000kg IP68 Sealed Shear Beam
EARTH300 Optional 300mm Earth Strap & Fittings**

Gedge Systems, 488 Church Street, Richmond, Victoria, 3121 Australia
phone + 61 3 9429 8396 fax + 61 3 9429 8097 Email gs-kmt@gedgesystems.com.au
web site:- <http://www.gedgesystems.com.au>

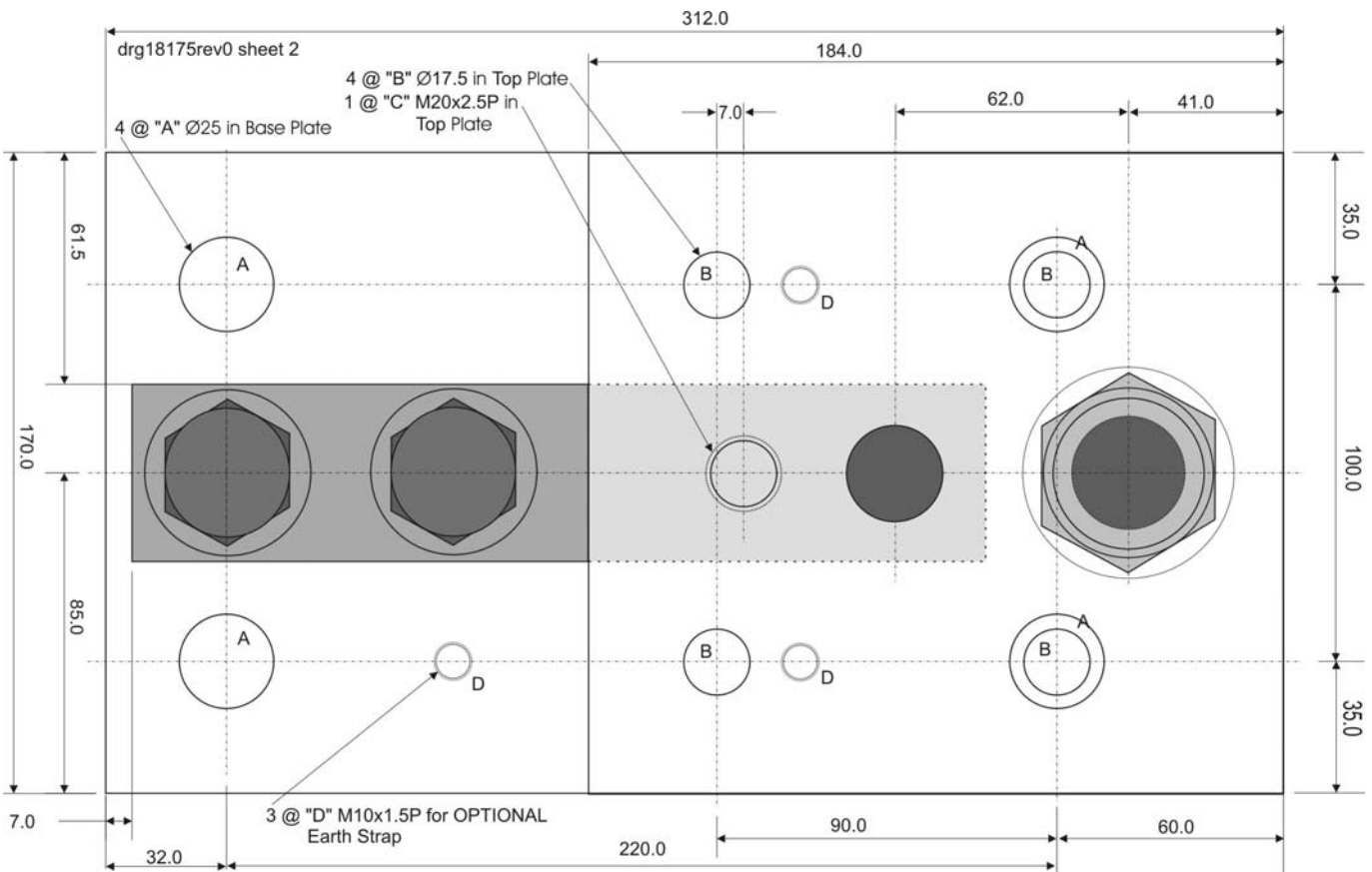
GKMB02T10C MOUNT & LOAD CELL OVERALL DIMENSIONS For full size drawings including a drawing of a silo FOOT PLATE suitable for use with this mount request drg18175rev0 sheets 1 to 3

drg18175rev0 sheet 1

ALL ITEMS SHOWN EXCEPT THE LOAD CELL ARE SUPPLIED AS PART OF THE GKMB02T10C MOUNT.



drg18175rev0 sheet 2



Gedge Systems, 488 Church Street, Richmond, Victoria, 3121 Australia
 web site:- <http://www.gedgesystems.com.au>