



GS-KMT Load Cells



# GKMA-37C 50t Heavy Duty Constrained Mount for GK2137S Canister Load Cells from 10t to 50t Capacity.

**3 TIMES MORE ACCURATE THAN MANY  
ALTERNATIVE SILO WEIGHING SOLUTIONS!!!**

Built-in Anti-Uplift  
rated to 10,000kg

Very heavy 20mm  
Plate Construction.

Built-In M30 Check  
Rod/Tie Rod rated  
10,000kg for Lateral  
Constraint while  
allowing cross axis  
thermal expansion.



Shipping plate  
included.

For 0.03% Accuracy  
uses Pendul Rocker  
GK2137S Stainless  
Steel IP68 Load Cell  
from 10t to 50t  
capacity.

Corrosion resistant  
finish - all non  
Stainless parts are  
Heavy Industrial  
Chrome Plated.

## KEY FEATURES

- Improved Accuracy - the Load Cell is not subject to any side loads and has no side load induced weighing errors.
- Very Heavy Construction from high strength C45 550MPa Steel Chrome Plated for Corrosion Resistance.
- 10t Anti-UpLift constraint to prevent the Silo/Tank from toppling & 10t along axis Tie Rod constraint to safely locate the Silo/Tank while allowing up to +/-4mm cross axis Thermal Expansion of the Silo or Tank.
- Use with the 0.03% Accurate GK2137S Stainless Steel IP68 Pendul-Rocker Self Centering Load Cell from 10t to 50t for the ultimate in weighing accuracy.
- Large holes for bolt-down & silo footplate attachment make installation easy. BasePlate 30mm; TopPlate 22mm
- Shipped fully assembled ready to install.
- No welding used. Tie Rod side plates are each clamped down with 20t force from 4 high tensile M12 Cap Screws.

## APPLICATIONS & ORDERING

- All Silos, Bins and Tanks.
- Inventory Control and Batching.
- Indoor and Outdoor locations and especially suited to wet and dirty environments.

### ORDERING:

The MOUNTS are shipped fully assembled with the selected Load Cell. Shipping weight is 38kg. Order :-

GKMA-37C Heavy Duty 50t Mount PLUS ONE Stainless Steel IP68 rated Canister Compression Load Cell model GK2137S-xx where xx = 10t; 20t; 25t; 30t; 40t or 50t capacity.

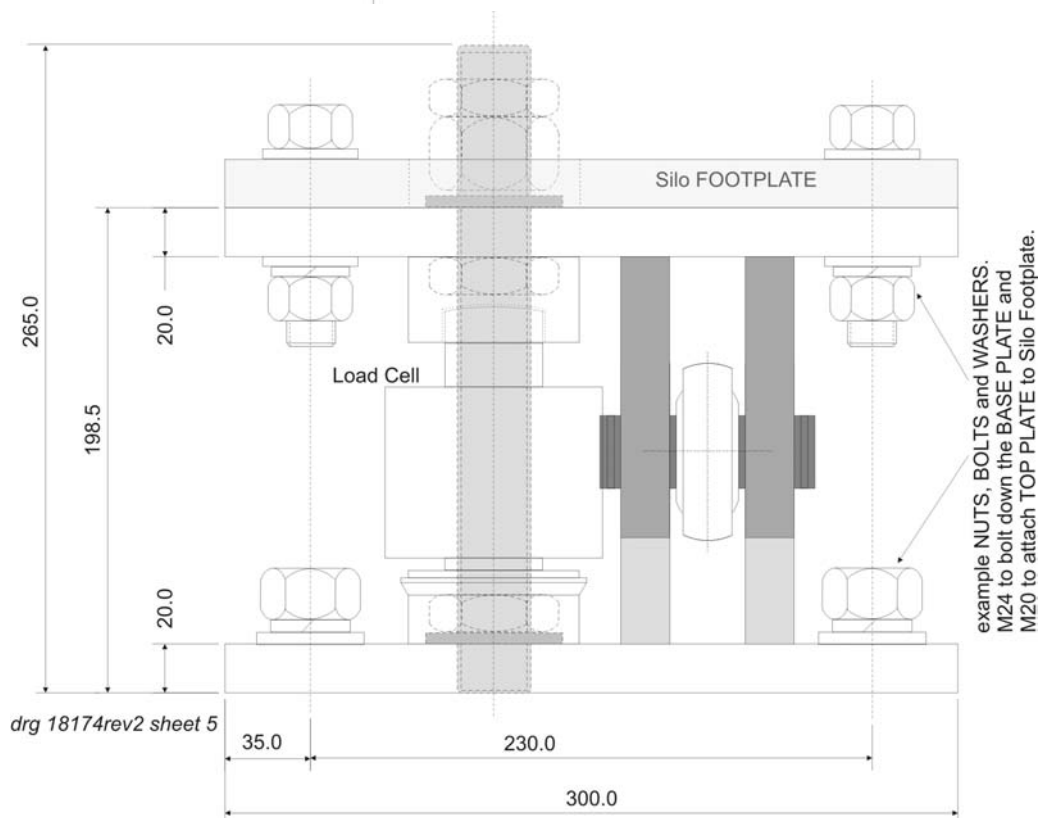
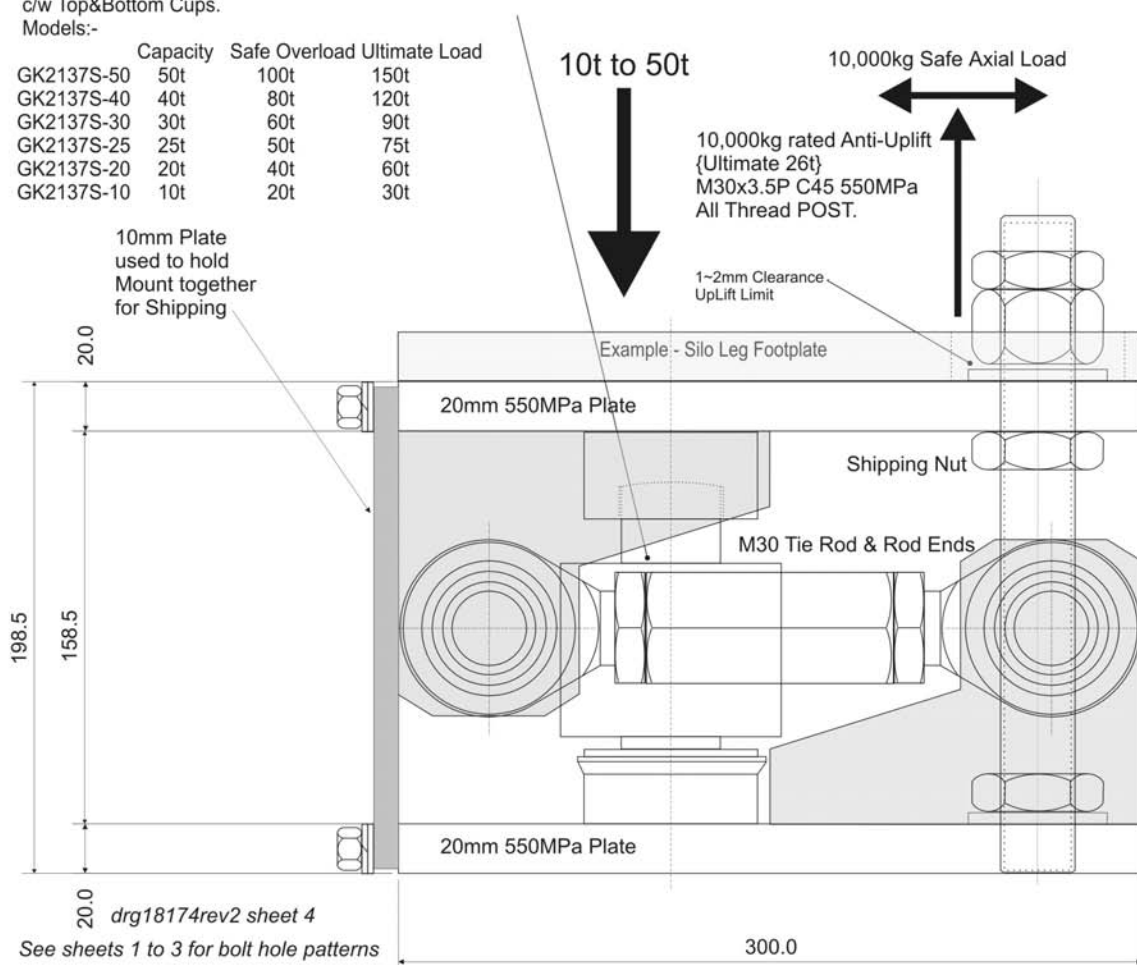
Gedge Systems, 488 Church Street, Richmond, Victoria, 3121 Australia  
phone + 61 3 9429 8396 fax + 61 3 9429 8097 Email [gs-kmt@gedgesystems.com.au](mailto:gs-kmt@gedgesystems.com.au)  
web site:- <http://www.gedgesystems.com.au>

# DIMENSIONS and DRAWINGS

Request a full set of dimensioned drawings No 18174 sheets 1 to 5. In addition to all MOUNT dimensions these FULL SIZE drawings include details of COLUMNS and FOOTPLATES that can be used for Silo Legs and Silo Leg Footplates intended to attach to the GKMA-37C Mount TOP PLATE.

GK2137S Canister Load Cell in Stainless Steel sealed to IP68  
c/w Top&Bottom Cups.  
Models:-

Model	Capacity	Safe Overload	Ultimate Load
GK2137S-50	50t	100t	150t
GK2137S-40	40t	80t	120t
GK2137S-30	30t	60t	90t
GK2137S-25	25t	50t	75t
GK2137S-20	20t	40t	60t
GK2137S-10	10t	20t	30t



**Gedge Systems, 488 Church Street, Richmond, Victoria, 3121 Australia**  
web site:- <http://www.gedgesystems.com.au>