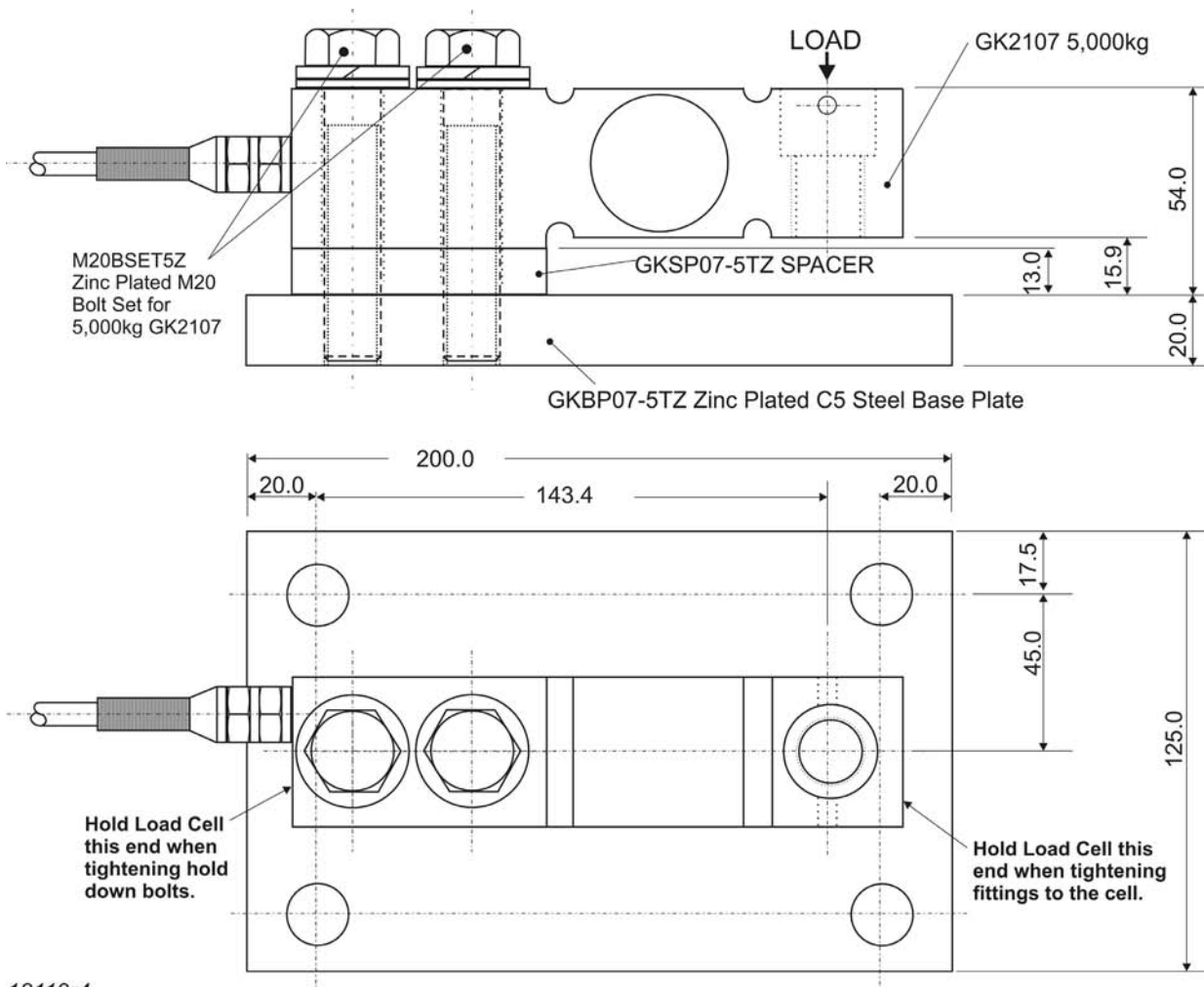


# GKBP07-5TZ Zinc Plated C45 Steel Base Plate for 5,000kg GK2107 Shear Beam Load Cells



Shown:- GK2107S-50 5,000kg Stainless Steel IP68 Shear Beam Load Cell on GKBP07-5TZ Base Plate.



18119r4

# Dimensions of GKBP07-5TZ Zinc Plated C45 Steel Base Plate for 5,000kg GK2107 & GK2107S Shear Beam Load Cells

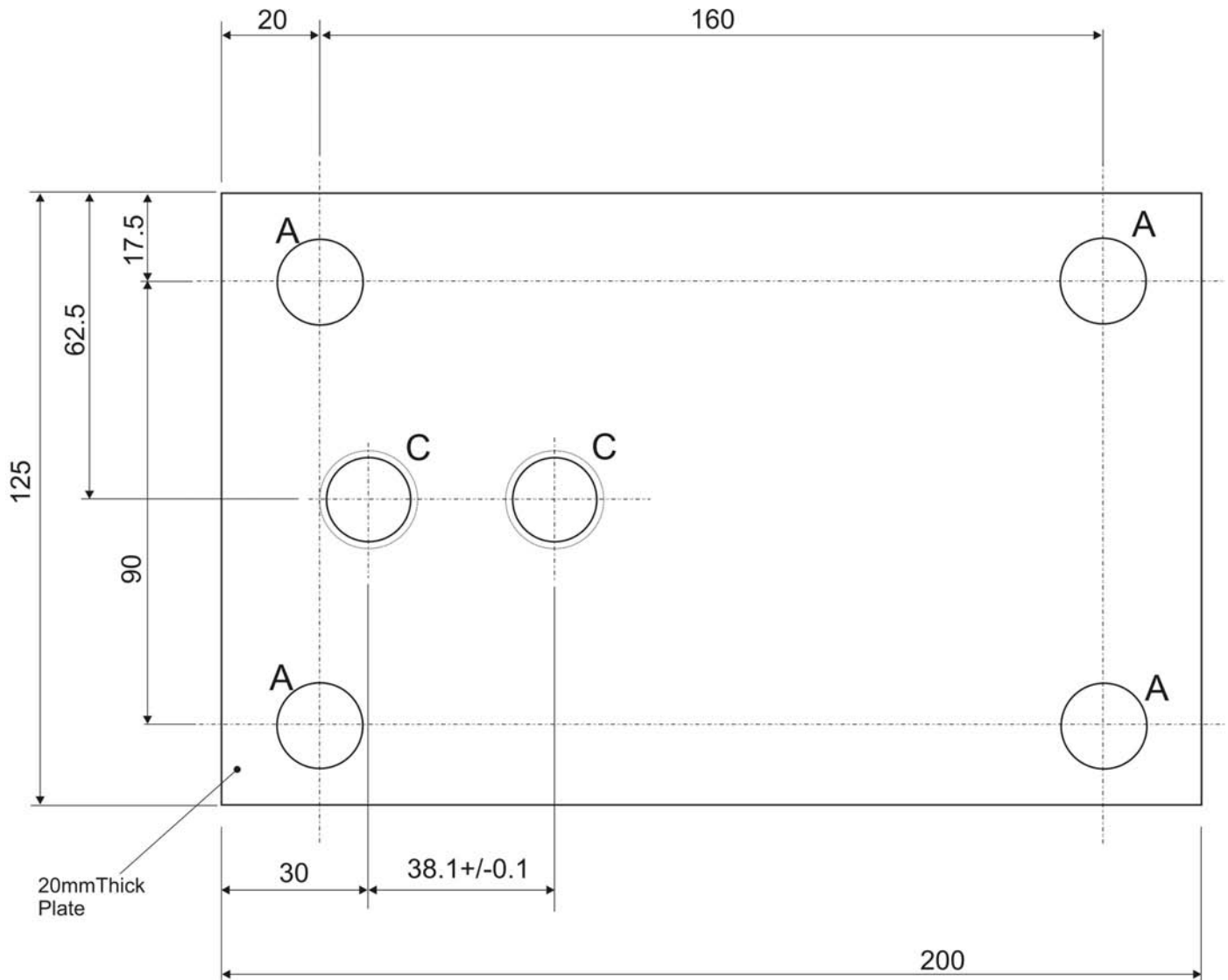
**GEDGE SYSTEMS - Since 1978 Australia's Leading Manufacturer of High Accuracy Weighing Electronics now bringing you Superior Quality GS-KMT Load Cells**

**ORDER:-**

- GKBP07-5TZ - Zinc Plated C45 Steel Base Plate
- GKSP07-5TZ - Zinc Plated C45 Steel Spacer Plate
- M20BSET5Z - M20x2.5Px80 Grade 8.8 Bolt Set and Washer Set ZP.

**TIGHTEN** bolts to 37kg-m (362N-m) for pre-load of 9,200kg

**WARNING** - Do not use Stainless Steel bolts unless they are hardened as the required tighten torque will exceed the bolts rated capacity.



**TABLE OF THRU HOLE SIZES**  
 A - 4 @ 17.5mm (For M16 hold down bolts)  
 C - 2 @ M20x2.5P (For Load Cell Mounting)

**MATERIAL:-**  
 20mm thick C45 Steel (AS1045) 550MPa Yield.  
**FINISH:-**  
 Fine ground then ELECTRO ZINC PLATE

18169r2

**Gedge Systems, 488 Church Street, Richmond, Victoria, 3121 Australia**  
**phone + 61 3 9429 8396 fax + 61 3 9429 8097 Email gs-kmt@gedgesystems.com.au**